

Omni-Grid[®] 360 Weld 075 / 100 / 150

.75" PITCH / 1" PITCH / 1.5" PITCH

Patented, Precision Welded Steel Belts that Run
Smoother, Stronger, Longer



Integral Guard Edge

Now with smooth,
rounded finish



World's only patented, lotension grid-style belt

Patented, zero-tension, 360° buttonless welds eliminate cracking commonly found with traditional bridge welds

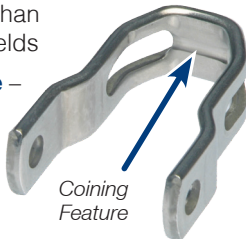
Coining process reduces break-in wear and increases belt life

Integral guard edges now with smooth, rounded finish

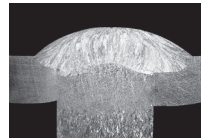
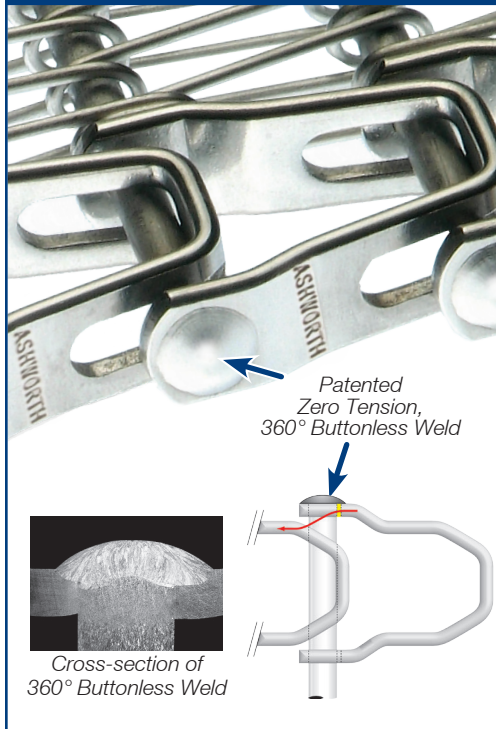
Increase capacity while minimizing maintenance costs and downtime in your most demanding spiral applications with Omni-Grid® 360 Weld.

Features & Benefits

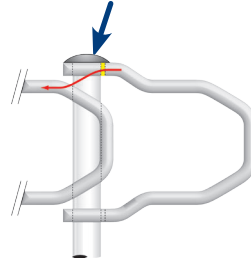
- **Proven Reliability** – All Ashworth belts are tested and rated for 100,000 cycles versus competitor ratings of only 50,000 cycles
- **Reduced Wear** – Smooth weld design enables the belt to run smoother with less system wear
- **Added Strength & Easy to Clean** – Patented zero-tension, 360° buttonless welds increase load bearing capacity and are easier to clean than traditional bridge welds
- **Increased Belt Life** – Coining feature reduces break-in wear and increases belt life*



Omni-Grid® 360 Weld Link

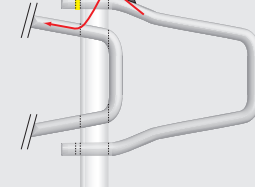
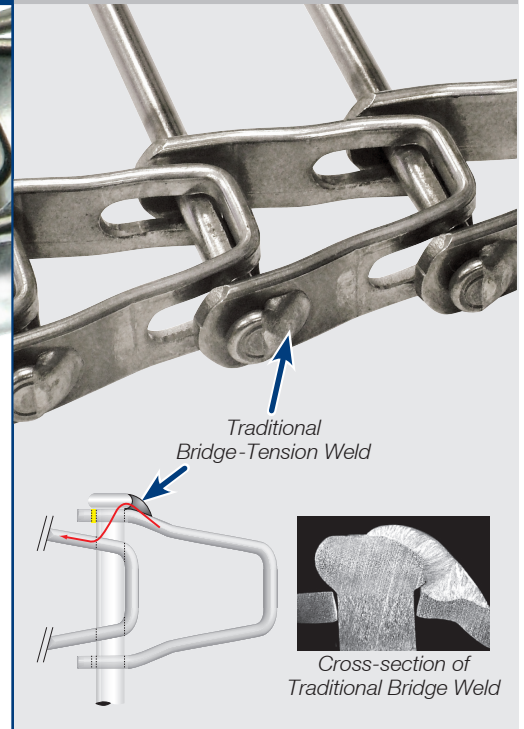


Cross-section of 360° Buttonless Weld



Patented Zero Tension, 360° Buttonless Weld

Competitor Link

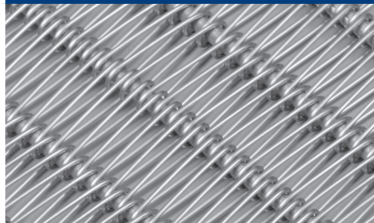


Cross-section of Traditional Bridge Weld

Traditional Bridge-Tension Weld

Omni-Grid® 360 Weld		Units of Measurement	075	100	150	
Turn Ratio			2.2 to 2.5	1.7 to 3.7	1.6 to 3.5	
Pitch			0.75" (19.1 mm)	1.08" (27.4 mm)	1.50" (38.1 mm)	
Widths – Spiral or Curve	in. (mm)		12" – 40" (305 mm – 1,016 mm)		12" – 54" (305 mm – 1,372 mm)	
Widths – Straight Run			12" – 48" (305 mm – 1,219 mm)		12" – 60" (305 mm – 1,524 mm)	
Link Height & Thickness			0.44" x 0.080" (11.1 mm x 2.0 mm)	0.50" x 0.105" (12.7 mm x 2.7 mm)	0.59" x 0.128" (15.0 mm x 3.3 mm)	
Rod Diameter & Material			0.192" (4.9 mm) stainless steel		0.236" (6.0 mm) stainless steel	
Conveying Surface			1.97" (50 mm) less than nominal width	2.36" (60 mm) less than nominal width	2.75" (69.9 mm) less than nominal width	
Belt Weight	lbs./ft. (kg/m)		See Technical Bulletin			
Allowable Tension:	CONVEYOR TYPE	# OF CYCLES				
	Spiral or Curve	100,000	lbs. (kg)	150 lbs. (68 kg)	200 lbs. (91 kg)	400 lbs. (181 kg)
		50,000		175 lbs. (79 kg)	250 lbs. (114 kg)	450 lbs. (204 kg)
	Straight Run	100,000		300 lbs. (136 kg)	400 lbs. (182 kg)	800 lbs. (364 kg)
		50,000		350 lbs. (170 kg)	500 lbs. (227 kg)	900 lbs. (408 kg)

Omni-Grid® 360 Weld Standard Features



Omni-Tough Mesh Overlay*

2½ times stronger than conventional overlays and is resistant to product sticking in freezer applications



Pigtail Spirals*

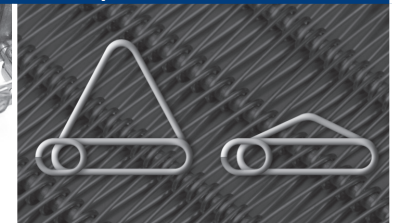
Reduces wire breakage

Omni-Grid® 360 Weld Options



Integral Guard Edges

Now with smooth, rounded edge finish. Durable and easier to clean than modular guard edges. Available in 100 and 150 pitch belts.



Special Mesh Spirals*

A cost effective solution for adding lane dividers or flights

*Originally patented by Ashworth Bros., Inc.

Technical Specifications are dependent upon individual applications and are subject to engineering review.